

()

**(*Triticum aestivum* L.)
SDS-PAGE D**

(// : // :)

D y-type

(ABD) B₅
()

F1

SDS-PAGE

(Dx2.1, Dy12.4)[†] (/ + /)

SDS-PAGE D *Triticum aestivum* :

(McFadden & Sears 1946; (*T. aestivum* L.)
Kihara et al. 1957; Tanaka 1959, 1961; Sharma &
Gill, 1983)

(DD) (ABD)
(AABB)

(Sharma & Gill,
.1983)

(Lagudah & Halloran, 1988)

(ABD)

(*T. tauschii*) D

D

D

(Lagudah & Halloran, 1988; Yan et al., 2003; Gianibelli et al., 2001)

(*Glu-A3, Glu-B3, Glu-D3*) *Glu-3*

(Payne et al., 1987; Shepherd, 1988)

()

()

(SS)

D

D (/ + /)

(SDS-PAGE)

(Payne et al., 1984)

(*Glu-A1, Glu-1*)

(**L/24092**) (*Triticum turgidum*) (*Glu-B1, Glu-D1*)

AUS24092 (*Triticum tauschii*)

(ABD¹) ()

(Gamborg 1984) B₅

x-type

Glu-B1 x-type

x-type

Glu-D1

y-type

Glu-A1

x-type

y-type

x-type

... (*Triticum aestivum* L.)

G-250

(Neuhoff et al. 1988)

(L/24092)

% /
(AABB^tD^t)

)

(

F₁

(L/24092)

F₁

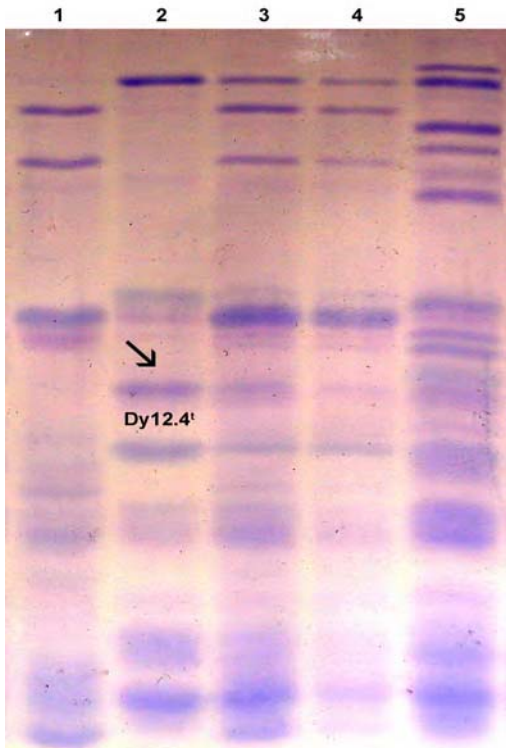
(L/24092)

AABB^tD^t

()

D

F₁



B₅

% /
()

SDS-PAGE

" ()

()

(DMSO)

/

%

AUS24092

L/24092

%

()

y-type

-
- 4. Chinese Spring
 - 5. Gabo
 - 6. Jabiru
 - 7. Wilgoyne

-
- 1. Laurie and Bennett
 - 2. Gupta and MacRitchie
 - 3. Gianibelli et al.

F₁

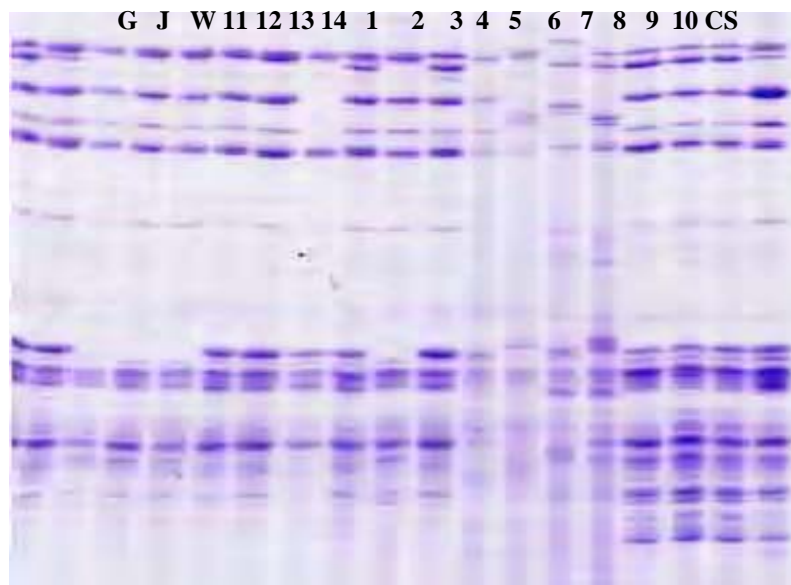
F₁

Glu-D1

(/ + /)
(+)

SDS-PAGE

Parents		<i>Glu-A1</i>	<i>Glu-B1</i>	<i>Glu-D1</i>	<i>Glu-A3</i>	<i>Glu-B3</i>	<i>Glu-D3</i>
AUS24092	D	-	-	(/ + /)			t
Langdon		Null	(+)	-	d	d	
L/24092		Null	(+)	(/ + /)	d	d	t
Baxter		()	(+)	(+)	b	b	a
Sunvale		()	(*+)	(+)	b	b	b
Chinese Spring		Null	(+)	(+)	a	a	a
Gabo		(*)	(+)	(+)	b	b	b
Jabiru		()	()	(+)	c	c	c
Wilgoyne		(*)	(+)	(+)	d	h	b



W J G CS

DH groups	No. of Lines	<i>Glu-A1</i> Subunit	<i>Glu-B1</i> Subunits	<i>Glu-D1</i> Subunits	<i>Glu-A3</i>	<i>Glu-B3</i>	<i>Glu-D3</i>
		-	(+)	(+)	d	b	b
		-	(+)	(/ + /)	d	b	t
		()	(+)	(+)	b	d	b
		()	(+)	(/ + /)	b	d	b
		-	(*+)	(+)	d	b	b
		-	(*+)	(/ + /)	d	b	b
		()	(*+)	(+)	b	b	b
		()	(*+)	(/ + /)	b	b	t
		()	(+)	(+)	d	b	a
		()	(+)	(/ + /)	d	b	t

()

D

AB

(*Glu-A1*, *Glu-1*

(*Glu-A3*, *Glu-B3*, *Glu-3* *Glu-B1*, *Glu-D1*)
D3)

(Lagudah & Halloran, 1988; Mujeeb-Kazi & Asiedu, 1995; Mackie et al., 1996; Sharma & Gill, 1983)

()

Glu-A1
 (+) *Glu-B1*
Glu-D1
 [(/ + /) (+)]
 (/ + /)
Glu-B1 *Glu-A1*
 (+) ()
Glu-D1
 (/ + /)

SDS-PAGE

Glu- *Glu-B1* *Glu-A1*

1. Interspecific hybridization

Dy Dy / Dx Dx /
x /

/

/

DNA

REFERENCES

- Gamborg, O. L. (1984). Plant cell cultures: nutrition and media. *Cell Culture and Somatic Cell Genetics of Plants*, 1, 18-26.
- Gianibelli, M. C., Gupta, R. B., Lafiandra, D., Margiotta, B. & MacRitchie, F. (2001). Polymorphism of high Mr glutenin subunits in *Triticum tauschii*: Characterisation by chromatography and electrophoretic methods. *Journal of Cereal Science*, 33, 39-52.
- Gianibelli, M. C., Masci, S., Larroque, O. R., Lafiandra, D. & MacRitchie, F. (2002). Biochemical characterisation of a novel polymeric protein subunit from bread wheat (*Triticum aestivum* L.). *Journal of Cereal Science*, 35, 265-275.
- Gupta, R. B. & MacRitchie, F. (1991). A rapid one-step one-dimensional SDS-PAGE procedure for analysis of subunit composition of glutenin in wheat. *Journal of Cereal Science*, 14, 105-109.
- Hassani, M. E., Gianibelli, M. C., Shariflou, M. R. & Sharp, P. J. (2005). Molecular structure of a novel y-type HMW glutenin subunit gene present in *Triticum tauschii*. *Euphytica*, 141, 191-198.
- Kihara, H., Yamashita, K. & Tabushi, J. (1957). Some aspects of the new amphiploids synthesized from the hybrids, emmer wheats x *Aegilops squarosa* var. strangulate. *Wheat Information Service*, 6, 14-15.
- Lagudah, E. S. & Halloran, G. M. (1988). Phylogenetic relationships of *Triticum tauschii*, the D genome donor to hexaploid wheat 1. Variation in HMW subunits of glutenin and gliadins. *Theoretical and Applied Genetics*, 75, 592-598.
- Laurie, D. A. & Bennett, M. D. (1986). Wheat x maize hybridization. *Canadian Journal of Genetics and Cytology*, 28, 313-316.
- Laurie, D. A. & Bennett, M. D. (1988). The production of haploid wheat plants from wheat x maize crosses. *Theoretical and Applied Genetics*, 76, 393-397.
- Mackie, A. M., Sharp, P. J. & Lagudah, E. S. (1996). The nucleotide and derived amino acid sequence of a HMW glutenin gene from *Triticum tauschii* and comparison with those from the D genome of bread wheat. *Journal of Cereal Science*, 24, 73-78.
- McFadden, E. S. & Sears, E. R. (1946). The origin of *Triticum spelta* and its free-threshing hexaploid relatives. *Journal of Heredity*, 37, 107-116.
- Mujeeb-Kazi, A. & Asiedu, R. (1995). The potential of wide hybridization in wheat improvement. *Annals of Biology (Ludhiana)*, 11, 1-15.
- Neuhoff, V., Arold, N., Taube, D. & Ehrhardt, W. (1988). Improved staining of proteins in polyacrylamide gels including isoelectric focusing gels with clear background at nanogram sensitivity using Coomassie brilliant blue G-250 and R-250. *Electrophoresis*, 9, 221-233.
- Payne, P. I., Holt, L. M., Jackson, E. A. & Law, C. N. (1984). Wheat storage proteins: their genetics and their potential for manipulation by plant breeding. *Philosophical Transactions of the Royal Society of London. Series B, Biological Sciences*, 304, 359-371.
- Payne, P. I., Nightingale, M. A., Krattiger, A. F. & Holt, L. M. (1987). The relationship between HMW glutenin subunit composition and the breadmaking quality of British-grown wheat varieties. *Journal of the Science of Food and Agriculture*, 40, 51-65.
- Sharma, H. C. & Gill, B. S. (1983). Current status of wide hybridization in wheat. *Euphytica*, 32, 17-31.

17. Shepherd, K. W. (1988). Genetics of wheat endosperm proteins in retrospect and prospect. In: Proceedings of the 7th International Wheat Genetics Symposium. Eds. T. Miller and R.M. Koebner. IPRS, Cambridge, 2, 919-931.
18. Suenaga, K. (1994). Doubled haploid system using the intergeneric crosses between wheat (*Triticum aestivum*) and maize (*Zea mays*). Bulletin National Institute of Agrobiological Resources (Japan), 9, 83-139.
19. Tanaka, M. (1959). Newly synthesised amphidiploids from the hybrids, Emmer wheat x *Aegilops squarrosa* varieties. *Wheat Information Service*, 8, 8.
20. Tkachuk, R. & Mellish, J. (1980). Wheat cultivar identification by gel high voltage gel electrophoresis. *Annales de Technologie Agricole*, 29, 207-212.
21. Yan, Y., Hsam, S. L. K., Yu, J., Jiang, Y. & Zeller, F. J. (2003). Allelic variation of the HMW glutenin subunits in *Aegilops tauschii* accessions detected by Sodium Dodecyl Sulphate (SDS-PAGE), Acid Polyacrylamide Gel (A-PAGE) and Capillary Electrophoresis. *Euphytica*, 103, 377-385.

