

()

*

(/ / : // :)

) () **M-79-4 M-79-17**
() ()
()

M-79-4

()
()

:

.(Hopkins, 1999)

.(Zhu, 2002)

(Clark & McCiag, 1982)

(Ramachandra Reddy et al., 2004)

()
(Ramachandra Reddy, RuBP
1996; Tezzara et al., 1999; Parry et al., 2002;
Chaitania et al., 2003)

(Ramachandra
Reddy et al., 2004; Ruiz-Toress, 2002)

(Parry et al., 2002; Chaitania et al., 2003)

(Vu et al., (rbc)
.1999)
(CA1P)
(Parry et al., 2002)

(Chaves et al.,
.2003)

(Martin & Ruiz-Torres, 1992)

CF0/CF1

(Hopkins, 1999)

(Herzog, 1986)

(Jung, 2004)

)

) (

(

(Jones &

.Corlett, 1992)

(Lawlor & Cornic, 2002)

(Ramachandra Reddy, 2004)

(Martin & Ruiz-Toress, 2002)

(Cornic,

.2000; Martin & Ruiz-Toress, 1992)

Martin and Ruiz- (Cornic, 2000)

(1992) Toress

(Souza et al., 2003)

(Jensen (Miyashita et al., 2005)

et al., 1996)

Lawlor,)

(1995

(Ritchie

et al., 1990)

(Martin et al., 1989)

)
 (Sairam et al., 1997)
 (Sing et al., 1992) (1992) Pastori & Tripi

(:
 (

$$= \frac{(\quad)}{\quad}$$

(Triticum aestivum L.)
 M-79-17 M-79-4
 () ()
 ()

(. /)
)
 ()
 : :
 :
 ()
 ()
 ()

$pWUE = (\quad / \quad) \cdot (\quad)$
 : (Merah, 2001)

(%) = $\frac{\quad}{\quad} \times$

(\quad)
 (\quad)
 (\quad)
 (\quad)

(IRGA, model: LCA4, ADC Bioscientific Ltd.
 Hoddeston, UK)

(Yang et al., 2000; Ahmad et al., 2002)

(1984) Meidner

(Clark & Mc Ciag, 1982)

(Fischer et al., 1998; Ahmadi & Baker, 1999)

(Spectrophotometer, model: Shimadzu UV-160A)

$(b \quad) \quad (a \quad)$
 (\quad / \quad)
 (\quad / \quad)

b, a

$(\quad) (\quad) (\quad)$

(Ashraf et al., 1994)

) (pWUE)

$) - / (\quad) \times v / (\quad * w) (\quad)$
 $= (/ (\quad)$

(Ritchie et al., 1990)

M-79-17
 () (Ritchie et al., 1990)
 M-79-4 , M-79-17
 /

M-79-17

()

(Peccetti et al., 1993)

M-79-17 M-79-4

()

()

M -79-4, M-79-

/
/

17

M-79-17

()

M-79-17 , M-79-4

()

/

/

()

CO₂

/	**	/	**	n.s	/	n.s	/	*	/	n.s
/	**	/	**	**	/	**	/	**	/	**
/	**	/	**	*	/	**	/	**	/	**
/	**	/	**	**	/	**	/	**	/	**
/		/			/		/		/	
/		/			/		/		/	()

n.s

**

*

... :

()

)

.(

Co ₂										
(mmol m ⁻² S ⁻¹)	(μmol Co ₂ mol ⁻¹)	(μmol mol ⁻¹)	(μmol Co ₂ m ⁻² S ⁻¹)	(μmol Co ₂ m ⁻² S ⁻¹)						
/ E	/ CD	A	/ CD	AB	E	E	DE	/ D	/ BC	
/ E	/ BCD	/ A	CD	CD	E	E	DE	/ D	/ ABC	M-79-17
/ E	/ AB	/ B	/ EFG	BCD	E	/ DE	BC	D	/ A	M-79-4
/ E	/ ABC	/ AB	/ DE	BC	E	DE	CD	/ D	/ A	
/ EF	/ A	/ FG	/ EFG	A	E	DE	AB	/ E	/ A	
/ F	/ D	DEF	/ G	AB	E	E	A	/ E	/ C	
EF	/ AB	/ BC	/ G	D	E	E	A	/ D	/ A	
/ B	/ A	/ A	/ B	/ B	/ A	/ B	/ A	/ B	/ A	

(Lawlor & Cornic, 2002;

.Ramachandra Reddy et al., 2004)

.()

M-79-17

.(Ritchie et al., 1990)

.()

M-79-4

.(Nicolas et al., 1985)

M-79-17

(El hafid et al., 1998)

M-79-17

M-79-4

()

(2003) Siosemarde .(Ritchie et al., 1990)

/ *	/ *	
/ **	/ **	
/ **	/ **	
/ **	/ **	*
/	/	
/	/	()

**

*

(Fischer et al., 1998).

()

M-79-4 M-79-17

()

M-79-17 M-79 4

M-79-17

(Ramachandra Reddy, 2004)

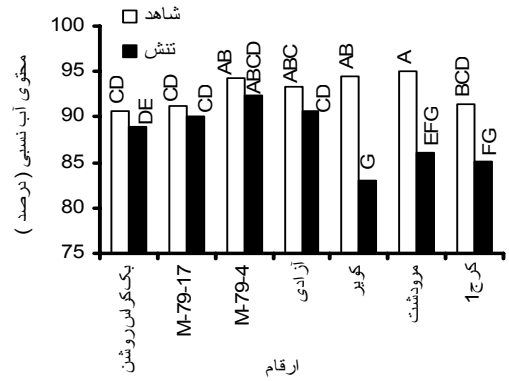
()

(Ramachandra Reddy, 2004)

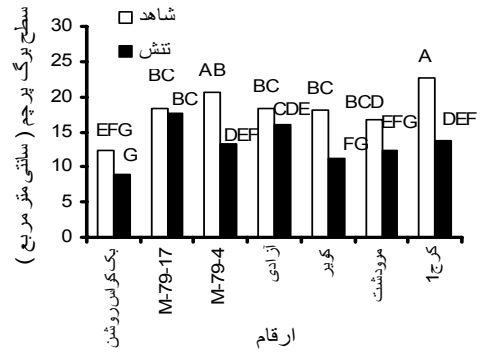
(Sheferd et al., 2002)

Ahmadi & Baker (Martin & Ruiz-Torres, 1992)
(1999)

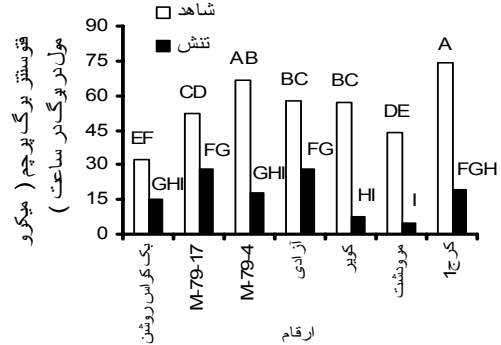
()



()



()



()

()

()

()

(Fischer et al., 1998)

CO₂

... :

M-79-17 M-79-4

b
()

()

()

()

(1992) Martin & Ruiz-Torres
RWC

()

M-79-4

M-79-4

M-79-17

()

(Castrillo & Turujillo, 1994)
(Castrillo & Calcango, 1989)

b

a

b

M-79-4

()

b

a

a

b

-

b

()

(2004) Jung (Ahmadi & baker, 1999)

,b ,a

()

a

b

b

a

/	*	/	**	/	**	/	n.s
/	**	/	**	/	**	/	*
/	*	/	**	/	*	/	n.s
/	**	/	**	/	**	/	n.s
/		/		/		/	
/		/		/		/	(%)

n.s

**

b

a

b

b

(Sairam et al., 1997)

b

()

b

(Ramachandra reddy et al., 2004)

(Ahmadi & Baker,

1999)

(Ashraf et al., 1994)

(Jensen et al., 1996)

(Castrillo & Calcango, 1989)

()

(Siosemarde, 2003)

()

()

(Sugiharto et al.,

1990)

(Castrillo & Calcango, 1989)

(Jensen et al., 1996)

(Castrillo & Calcango, 1989)

(Parry et al., 2002)

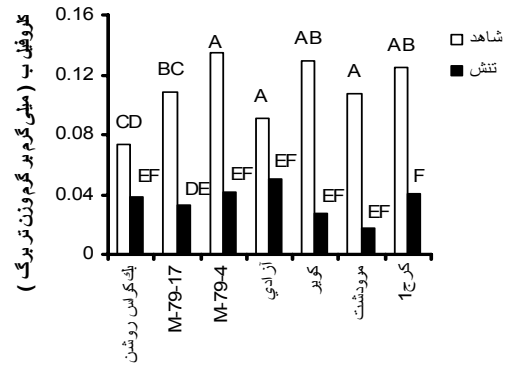
(Xu et al., 1996)

(Zhu, 2002)

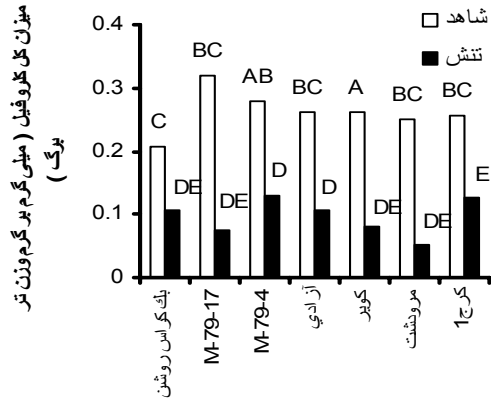
(Parry et al., 2002)

Mg²⁺

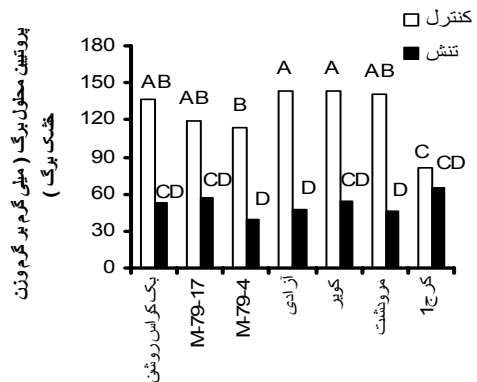
(Chaves et al., 2003)



()



()



()

() b

()

()

REFERENCES

1. Ahmadi, A. & Baker, A. (1999). Stomatal and non-stomatal factors limiting of photosynthesis of with under drought stress. *Iranian Journal of Agricultural Science*, 31(4), 825- 831. (In Farsi).
2. Ahmad, S., Nawata, E., Hosokawa, M., Domae, Y. & Sakuratani, T. (2002). Alterations in photosynthesis and some antioxidant enzyme activities of mungbean subjected to waterlogging. *Plant Science*, 136, 257 – 269.
3. Ashraf, M. Y., Azmi, A. R., Khan, A. H. & Ala, S. A. (1994). Effects of water stress on total phenols, peroxidase activity and chlorophyll content in wheat. *Acta Physiologie Plantarum*, 16, 185-191.
4. Caruso, C., Chilosi, G., Caporale, C., Leonaodi, L., Bretini, L., Margo, P. & Buonocore, V. (1999). Induction of pathogenesis – related proteins in germinating wheat seeds infected with *Fusarium culmorum*. *Plant Science*, 140, 86 – 97.
5. Castrillo, M. & Calcango, A. M. (1989). Effects of water stress and rewatering on ribulose- 1,5 - bisphosphate carboxylase activity, Chlorophyll and protein contents in two cultivars of tomato. *Journal of Horticultural Science*, 64(6), 717 – 724.
6. Castrillo, M. & Turujillo, I. (1994). Ribulose-1,5-bisphosphate carboxylase activity and chlorophyll and protein content in two cultivars of french bean plants under water stress and rewatering. *Photosynthetica*, 30, 175 – 181.
7. Chaitania, K. V., Sundar, D., Jutur, P. P. & Ramachandra Reddy, A. (2003). Water stress effects on photosynthesis in different mulberry cultivars. *Plant Growth Regulation*, 40, 75 – 80.
8. Chaves, M. M., Maroco, J. P. & Pereira, S. (2003). Understanding Plant responses to drought – From genes to the whole plant. *Functional Plant Biology*, 30, 239 – 264.
9. Clark, J. M. & Mc Ciag, T. N. (1982). Evaluation of techniques for screening for drought resistance in wheat. *Crop Science*, 22, 503 – 505.
10. Cornic, G. (2000). Drought stress inhibits photosynthesis by decreasing stomatal aperture - Not by affecting ATP synthesis. *Trends Plant Science*, 5, 187- 198.
11. Coyne, P. I., Bradford, J. A. & Dewald, L. C. (1982). Leaf water relations and gas exchange relations to forage production in four Asiatic bluestems. *Crop Science*, 22, 1036-1040.
12. El hafid, R., Smith, D., Hkarro, M. & Samir, K. (1998). Root and shoot growth, water use and water use efficiency of spring durum wheat under early season drought. *Agronomie*, 18, 191-195.
13. Fischer, R. A., Rees, D., Sayer, K. D., Lu, Z. M., Candon, A. G. & Saavedra, A. L. (1998). Wheat yield progress associated with higher stomatal conductance and photosynthesis rate, and cooler canopies. *Crop Science*, 38, 1467-1475.
14. Herzog, H. (1986). *Source and sink during reproductive period of wheat*. Scientific publishers, Berlin and Hamburg. PP.147-148.
15. Hopkins, W.G. (1999). *Introduction to plant physiology* (2th ed.). John Wiley. New York. PP.64-65.
16. Jensen, C. R., Mogensen, V. O., Mortensen, G., Andersen, M. N., Schjoerring, J. K., Thag, J. H. & Koribidis, J. (1996). Leaf photosynthesis and drought adaptation in field-grown oilseed Rape (*Brassica napus* L.). *Aust J Plant Physiology*, 23, 631- 644.
17. Jones, H. G. & Corlett, J. E. (1992). Current topics in drought physiology. *Journal of Agricultural Science*, 119, 291- 296.
18. Jung, S. (2004). Variation in antioxidant metabolism of young and mature leaves of *Arabidopsis thaliana* subjected to drought. *Plant Science*, 166, 459.
19. Lawlor, D. W. (1995). Photosynthesis, productivity and Environment. *Journal of Experimental Botany*, 46, 1449-1461.
20. Lawlor, D. W. & Cornic, G. (2002). Photosynthetic carbon assimilation and associated metabolism in relation to water deficits in higher plants. *Plant Cell Environment*, 25, 275 – 294.
21. Martin, B. & Ruiz-Torres, N. A. (1992). Effects of water-deficit stress on photosynthesis, Its component and component limitations and on water use efficiency in wheat (*Triticum aestivum* L.). *Plant Physiology*, 100, 733-739.

22. Martin, M., Brown, J. H. & Fergusen, H. (1989). Leaf water potential, relative water content and diffusive resistance as screening techniques for drought resistance in barley. *Agronomy Journal*, 81, 100-105.
23. Meidner, H. (1984). *Class experiments in plant physiology*. British library cataloguing in publication data. London. PP. 53-54.
24. Merah, O. (2001). Potential importance of water status traits for durum wheat improvement under Mediterranean conditions. *Journal of Agricultural Research*, 137, 139-145.
25. Miyashita, K., Tanakamaru, S., Maitani, T. & Kimura, K. (2005). Recovery responses of photosynthesis, transpiration and stomatal conductance in kidney bean following drought stress. *Environmental and Experimental Botany*, 24, 113-121.
26. Nicolas, M. E., Lambers, H., Simpson, R. G. & Dalling, M. J. (1985). Effect of drought on metabolism and partitioning of carbon in two wheat varieties differing in drought tolerance. *Annals of Botany*, 55, 727-742.
27. Parry, M. A. J., Andralojic, P. J., Khan, S., Lea, P. J. J. & Keys, A. J. (2002). Rubisco Activity: effects of drought stress. *Annals of Botany*, 89, 833 – 839.
28. Pastori, G. M. & Trippi, V. S. (1992). Oxidative stress induces high rate of glutathione reductase synthesis in a drought resistant maize strain. *Plant Cell Physiology*, 33, 957-961.
29. Pecetti, L., Annicchiarico, P. A. & Kashour, G. (1993). Flag leaf variation in Mediterranean durum wheat landraces and its relationship to frost and drought tolerance and yield responses in moderately favorable conditions. *Plant Genetic Resources Newsletter*, 93, 25-58.
30. Ramachandra Reddy, A., Choityana, K. V. & Ivekanadan, A. (2004). Drought-induced responses of photosynthesis and antioxidant metabolism in higher plants. *J Plant physiology*, 161, 1189-1202.
31. Ramachandra reddy, A. (1996). Fructose-2, 6-bisphosphatase Modulated photosynthesis in sorghum leaves grown under low water Regimes. *Phytochemistry*, 128, 544-551.
32. Rao, I. M., Sharp, R. E. & Boyer, J. S. (1987). Leaf magnesium alters photosynthesis response to low water potentials in sunflower. *Plant Physiology*, 84, 1214-1219.
33. Ritchie, S. W., Nguyen, H. T. & Holaday, A. S. (1990). Leaf water content and gas exchange parameters of two wheat genotypes differing in drought resistance. *Crop Science*, 30, 105-111.
34. Sairam, R. K. & Siravastava, G. C. (2002). Changes in antioxidant activity in sub-cellular fractions of tolerant and susceptible wheat genotypes in response to long term salt stress. *Plant Science*, 162, 897-907.
35. Sairam, P. K., Deshmukh, P. S. & Shukla, D. S. (1997). Tolerance of drought and temperature stress in relation to increased antioxidant enzyme activity in wheat. *Journal of Agronomy and Crop Science*, 178, 171-178.
36. Shepherd, A., Mc Ginn, S. M. & Wyseure, G. L. C. (2002). Simulation of the effect of water shortage on the yields of winter wheat in north-East England. *Ecological Modeling*, 147, 41-52.
37. Singh, M., Siravastava, J. P. & Kumar, A. (1992). Cell membrane stability in relation to drought tolerance in wheat Genotypes. *Journal of Agronomy*, 168, 186-190.
38. Siosemarde, A. (2003). *Physiological aspects of wheat cultivars in relation to drought stress*. Ph. D. dissertation, of Tehran university, Iran. (In Farsi).
39. Souza, R. P., Machado, E. C., Silva, J. A. B., Lagoa, A. M. M. A., & Silveria, J. A. G. (2003). Photosynthetic gas exchange, chlorophyll fluorescence and some associated metabolic changes in cowpea (*Vigna unguiculata*) during water stress and recovery. *Environmental and Experimental Botany*, 1-13.
40. Sugiharto, B., Miyata, K., Nakamoto, H., Sasakawa, H. & Sugiyama, T. (1990). Regulation of expression of carbon-assimilation enzymes by nitrogen in maize leaf. *Plant Physiology*, 92, 963-969.
41. Tezara, W., Mitchell, V. J., Driscoll, D. D., Lawlor, D. W. (1999). Water stress inhibits plant photosynthesis by decreasing coupling factor and ATP. *Nature*, 401, 914-917.
42. Vu, J. V. C., Gesch, R. W., Allen, L. H., Bcote, K. J. & Bowes, G. (1999). CO₂ enrichment delays a rapid, drought induced decrease in rubisco small subunit transcript abundance. *Journal of Plant Physiology*, 155, 139-145.
43. Xu, H., Ishii, R. & Xu, H. (1996). Wheat cultivars I. Maintenance of leaf turgor and relative water content. *Japanese of Crop Science*, 65, 518-524.
44. Yang, J., Zhang, J., Huang, Z., Zhu, Q. & Wang, L. (2000). Remobilization of carbon reserves is improved by controlled soil drying during grain filling of wheat. *Crop Science*, 40, 1645-1655.
45. Zhu, J. K. (2002). Salt and drought stress signal transduction in plants. *Annual Review of Plant Biology*, 53, 247 – 273.